



# Power of a Diverse Collaborative Network

Clean and clear water by 2040 - It is possible in Lancaster

Photo from Lancaster Water Week



**Lancaster**  
CLEAN WATER PARTNERS



The entire community  
is working on the **same goal** at the **same time**  
- to improve our local water quality



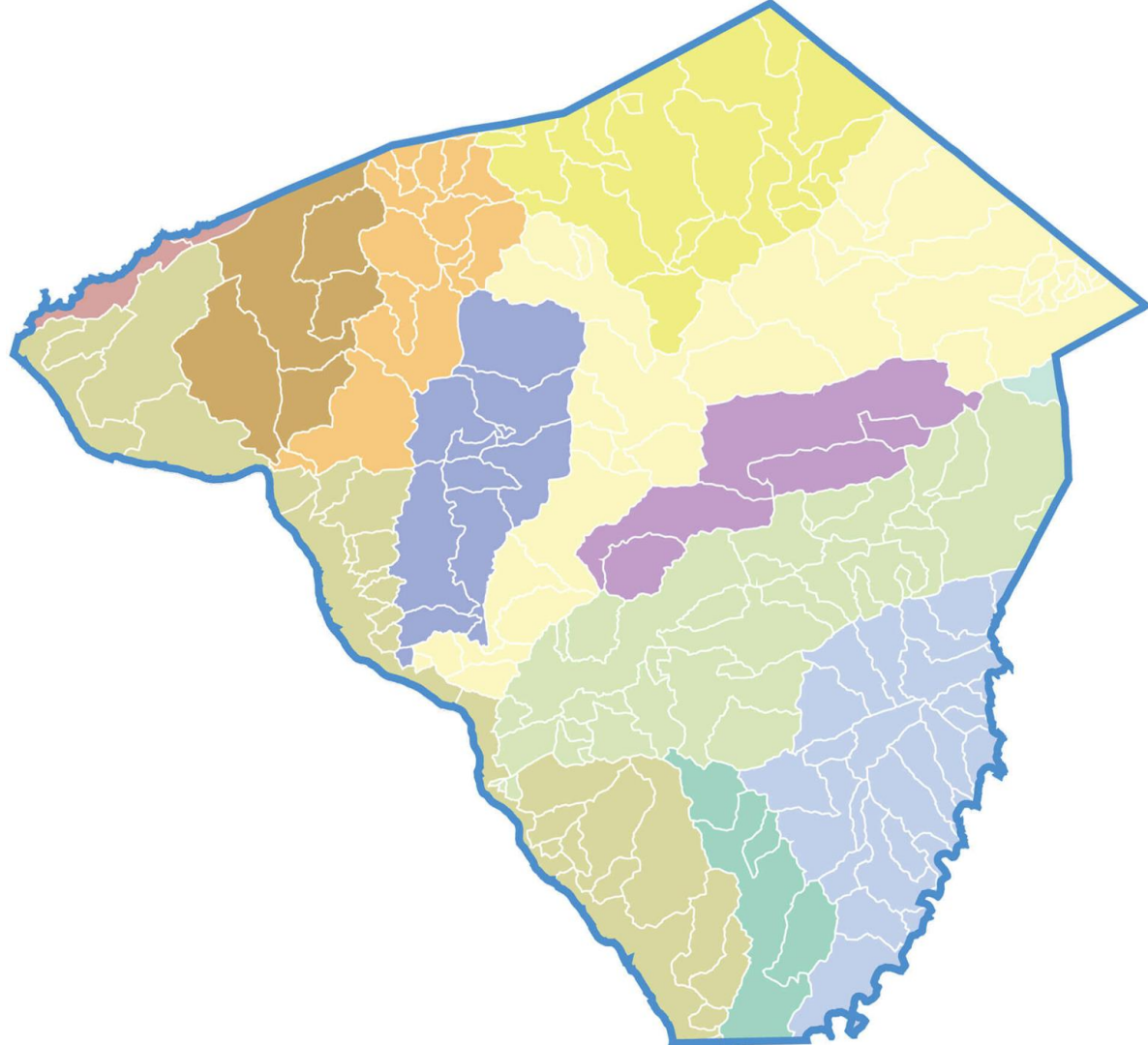
# Pennsylvania's State Constitution states...



“...the people have the right to clean air, pure water, and to the preservation of the natural, scenic, historic and esthetic values of the environment.”

*– Article I, Section 27*

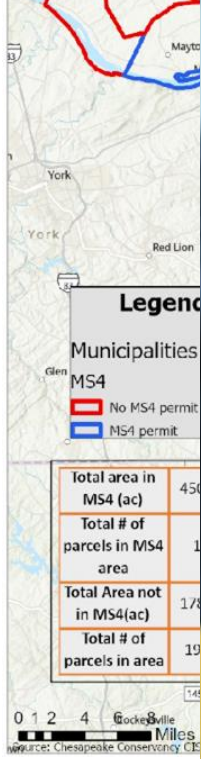








# U.S. News Best Places Lancaster in top 5 best

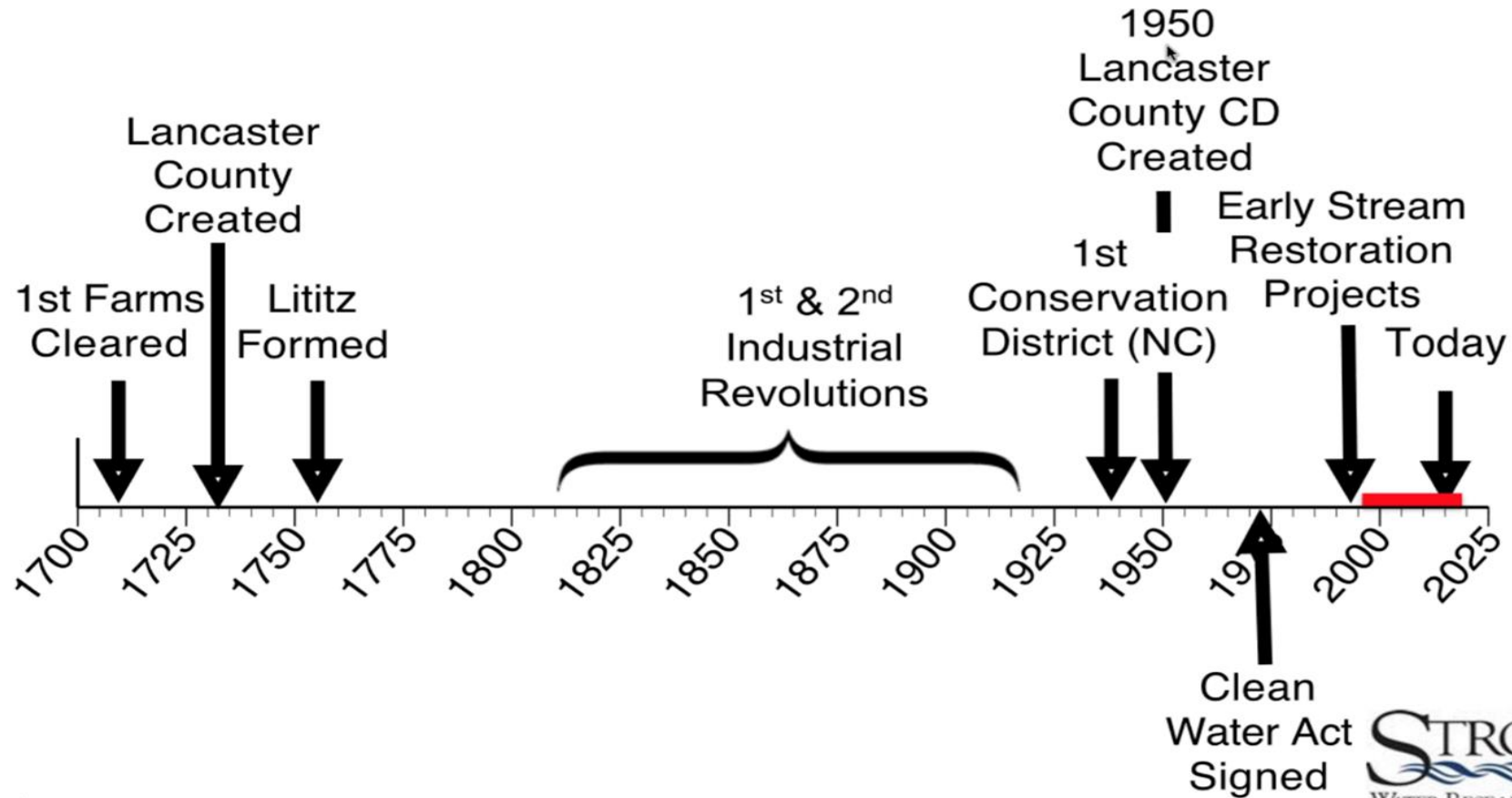


dreamstime.com

ID 147103621 © Carbouval



# Lancaster County History



# Water Quality in Lancaster

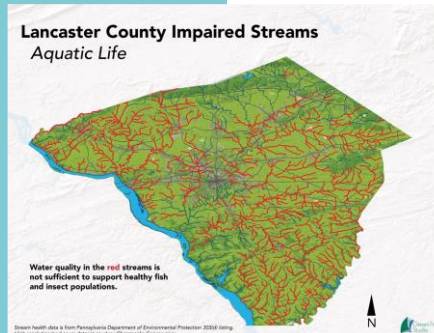
## Problem

More than half of Lancaster County's 1,400 miles of streams are impaired.

Lancaster County streams have the highest amount of nitrogen, phosphorus, and sediment in monitored areas of the Chesapeake Bay Watershed.

## Solution

Build and sustain a local multi-sector collaboration, supported by a strong backbone organization, to advance a community-led Common Agenda toward a shared result.



## A Tool That Pushed Our Progress - Common Agenda



**A shared vision** of clean and clear water in Lancaster County by 2040.

**Our shared mission** is to rapidly accelerate and expand the ability of the partner organizations to restore and sustain healthy Lancaster County waterways.

**The Common Agenda outlines how we'll get there.**





## Our Values



### **Collaboration not duplication**

Success comes from elevating partner organizations, not from duplication of efforts and competition.



### **Operate with a bias towards action**

We value on-the-ground work. and results that create momentum for innovative solutions to community problems.



### **Trust**

The Partners was created by community members for community members and our grassroots approach inspires trust in the community.



### **Clean and clear water for all**

Equal access to justice and clean water are human rights. Our collaborative work amplifies the diverse voices in our community.

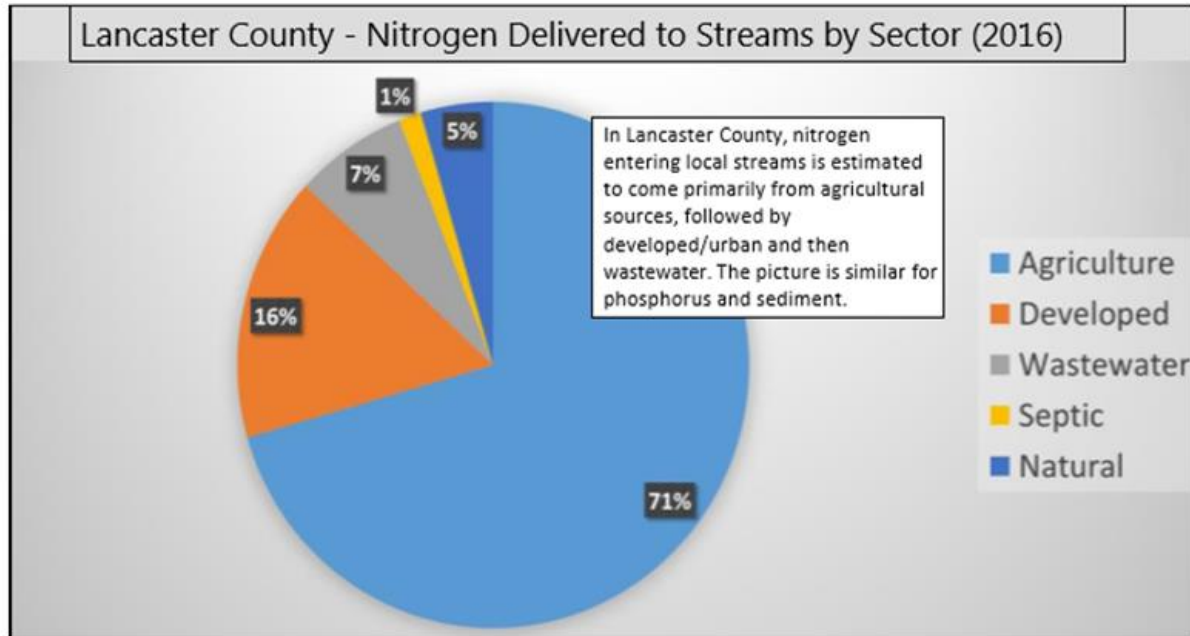


### **Transparency**

We tell the truth in a way people can verify and declare our intent. We operate truthfully with genuine openness and authenticity.



*We know the best opportunities for clean water work and economic support for Lancaster's local priorities and people are in agriculture.*



Source: Community Clean Water Toolbox, DEP 2018

Lancaster is responsible for 21% of the state's nitrogen and 23% of the phosphorus reduction goals – that's a lot of work in one county!

***What we've realized:***

- It's absolutely possible
- It is underfunded and understaffed



0 2500000 5000000 7500000 10000000 12500000

# Agriculture

**Lancaster County is the most productive non-irrigated farming county in the United States.**

**~5,000 farms - average size is 71 acres (state average is 144 acres) USDA 2022 Ag Census**

Jointly, the county's Agricultural Preservation Board and Lancaster Farmland Trust have 113,000 acres of farmland preserved. Nearly 80% of preserved farm owners that work with the Farmland Trust are Plain Sect Amish or Mennonite farmers. **We are the #1 county in the nation for farmland preservation.**



# Impaired Waters List in Pennsylvania

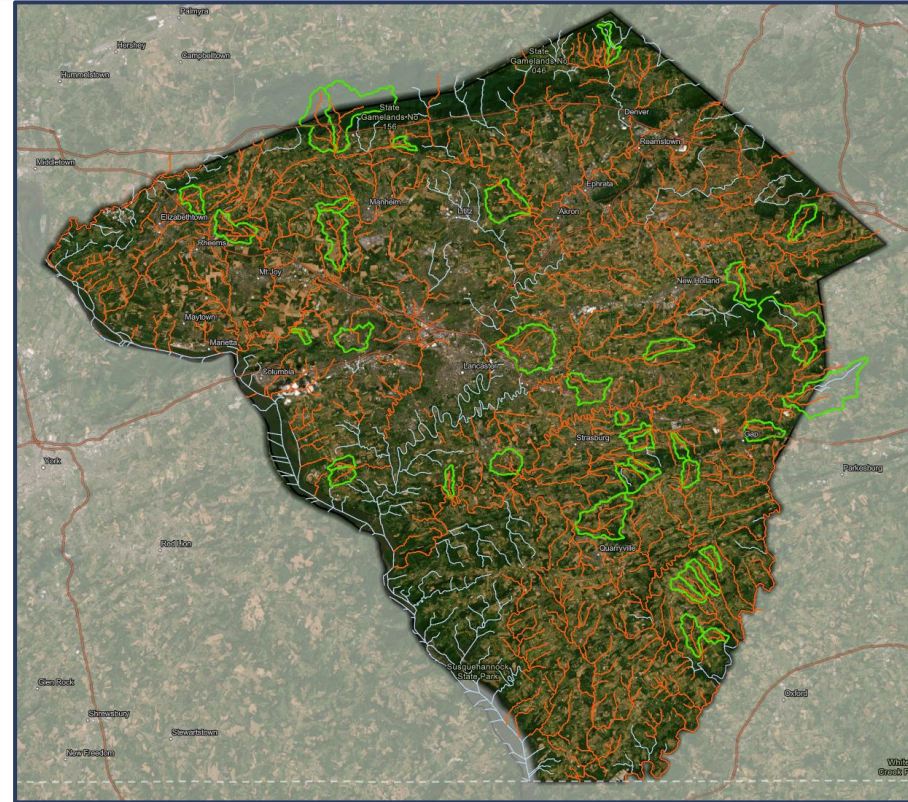
## Federal Clean Water Act Section 303(d)

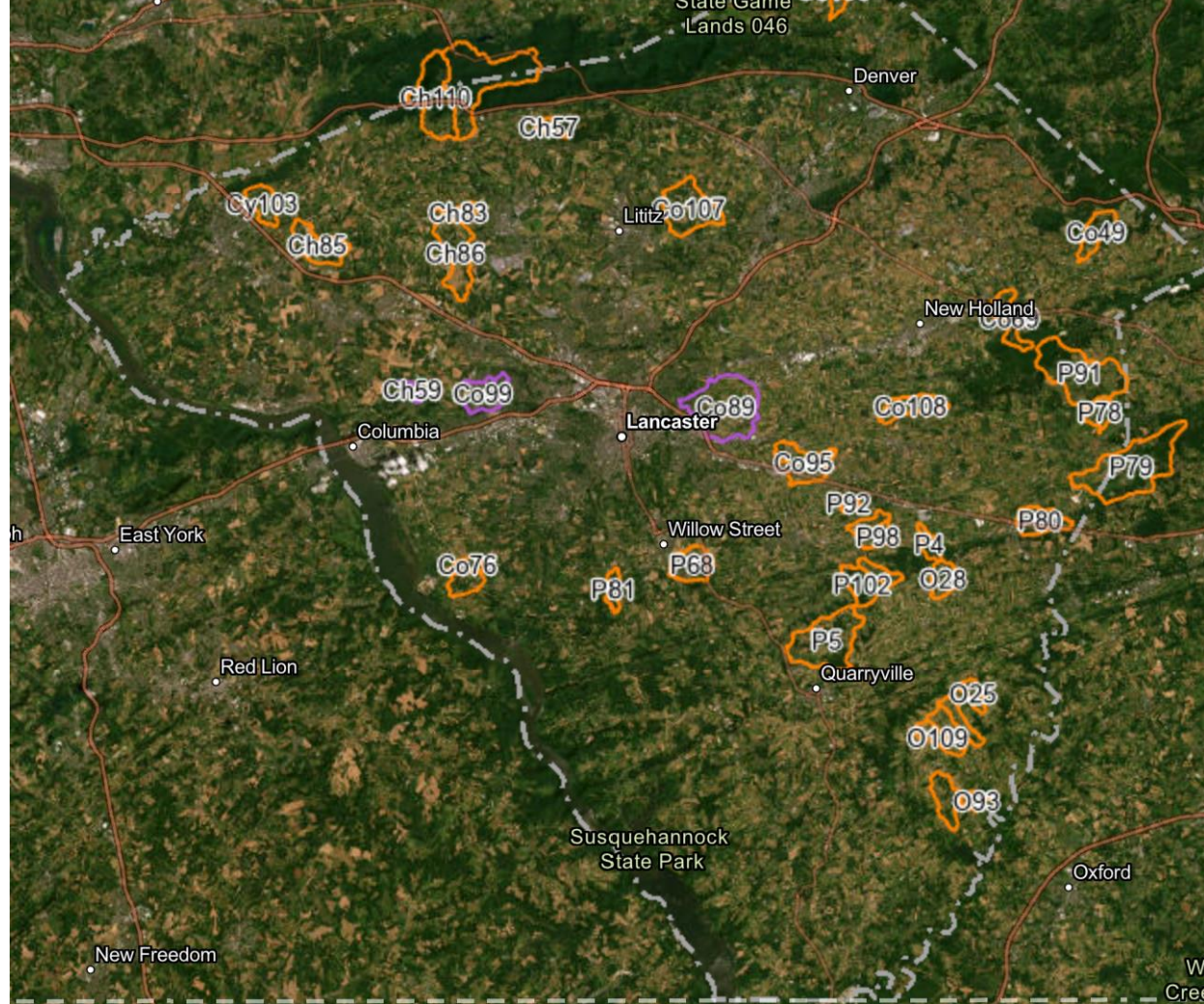
Department	Department of Environmental Protection
"Use" terminology	Protected use
Example of "use"	<ol style="list-style-type: none"><li>1. Aquatic life</li><li>2. Potable water</li><li>3. Recreation</li><li>4. Fish consumption</li></ol>
Parameters for our "use"	benthic macros IBI, physical habitat evaluation
Cause	<p>Erosion, Siltation, Turbidity: Excess soil from stream banks or beds, or off the land that damages ecosystems.</p> <p>Habitat Alterations: Changes to the stream that make it harder for plants and animals to survive.</p> <p>Industrial, Municipal, Chemical, Metal: Pollution primarily from man-made sources.</p> <p>Nutrients: Nitrogen and phosphorus that, in excess, can result in negative changes to ecosystems.</p> <p>Pathogens: Bacterial pollution that can cause illnesses in humans.</p>
Sources	1) acid mine drainage, (2) agriculture, (3) urban and stormwater runoff, and (4) wastewater.
Unit of assessment	COMID (NHD)



# Rapid Stream Delisting

- Fastest Recovery
- Efficient Implementation
- Building momentum







Excerpt from:

# CLEAN WATER CONVERSATIONS

EPISODE 2 WITH LAMONTE GARBER





# STAUFFER RUN



[HOME](#) [ABOUT US](#) [FEATURES & PHOTOS](#) [RESIDENTS](#) [NEIGHBORHOOD](#) [APPLY OR PAY ONLINE](#) [CONTACT](#)



## AMENITIES

On-site management, Picturesque landscaping, Memberships to Indoor & outdoor swimming pool & spa with grill and poolside Wi-Fi, Business center, Pet friendly, Adjacent to walking paths and Tot Lot.

[VIEW](#)



## HOMES

1, 2, and 3 Bedroom homes

[VIEW](#)



## NEIGHBORHOOD

Located in East Lampeter Township, we're just minutes from Routes 30, 222, 283 and downtown Lancaster.

[VIEW](#)





Becky Marks, from the church: “Whenever I go to Lutheran Church of the Good Shepherd on Greenfield Rd in Lancaster-Greenfield Neighborhood, I purposely park behind our church so that I will “have” to walk past our rain garden. I love looking at all the native plants working together to improve habitat for the bees, birds, butterflies, and moths. I’ve stood in the pouring rain watching the rain garden fill up from the water being directed from our church roof, knowing that the water will be directed underground to be naturally purified and cleaned and eventually return to the Stauffer Run watershed as clean water. Before the rain garden, the stormwater from the roof was spilling out onto our asphalt parking lot picking up pollutants which then went into the Stauffer Run. I feel like we are stewarding one little corner of our church property making our Earth just a little bit better. “



# PROGRESS

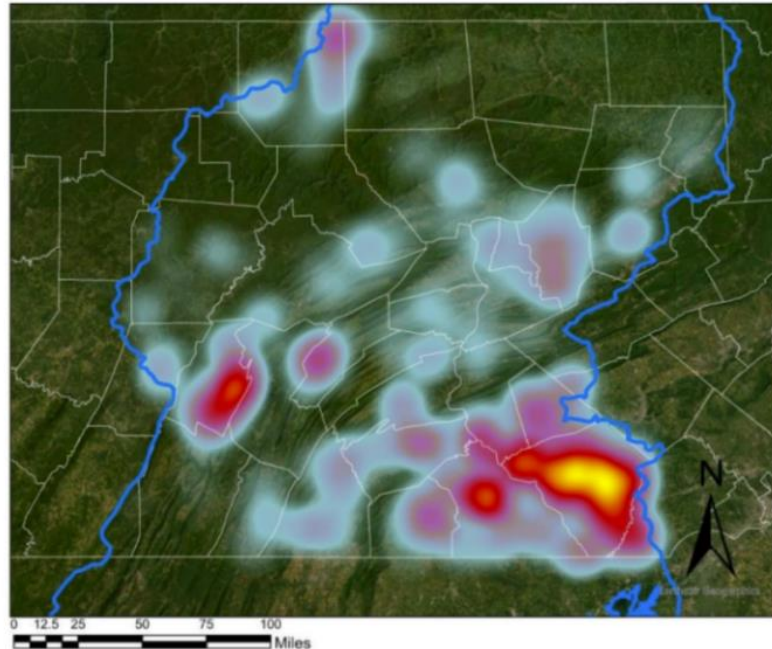
Is it working?



# PROGRESS!

## Reporting and Outcomes

### BMPs with Lat and Longs for 2023 Progress Year



#### Legend



There are 8,178 new BMPs with Latitudes and Longitudes.

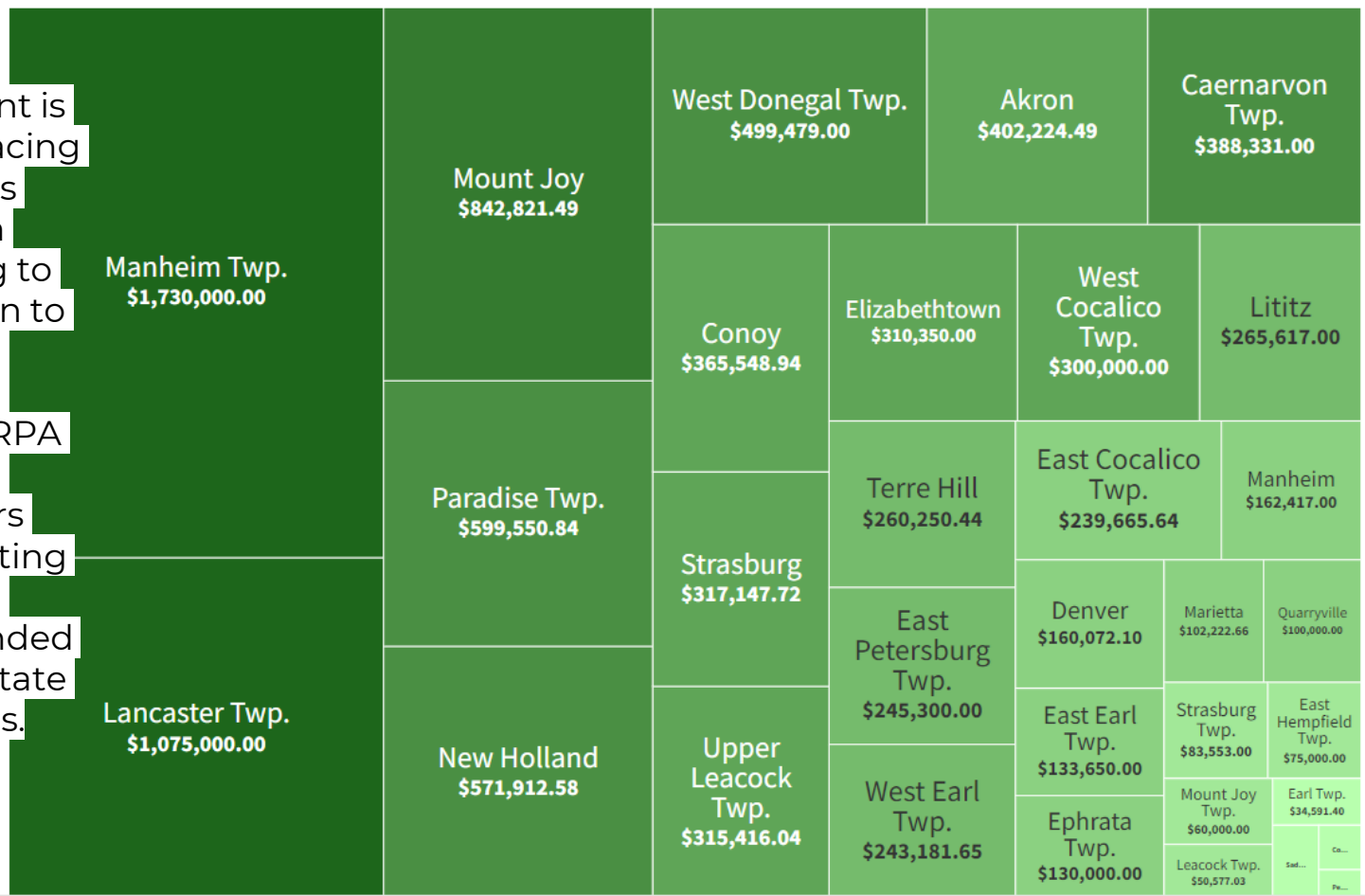


# Water infrastructure: \$10,224,293

All

Stormwater management is a significant challenge facing local governments across the country, touching on everything from flooding to environmental protection to public health. In Lancaster County, municipal officials say ARPA dollars took some of the burden off their taxpayers when it came to completing these projects, many of which are mandates handed down from federal and state environmental regulators.

- LNP article 2024







# Lancaster Watershed Leadership Academy

## 2025 Cohort Starting Soon!

The **Lancaster Watershed Leadership Academy** is a bi-annual program that supports the personal leadership development of individuals involved in the collective effort for clean water in Lancaster County. The twelve-month program is jam-packed with watershed content, field investigations, professional leadership content, and an overnight retreat on the Chesapeake Bay.

Scholars are as unique and diverse as the communities in Lancaster County. They walk away with an understanding of watersheds, leadership skills and application, and countless resources to integrate themselves into clean water work.

For more information and the 2025 schedule, [click here](#).

Nominations are closed for the Class of 2025.





Overview Discussions

\*\*\*

Search

## Lancaster Clean Water Partners Map

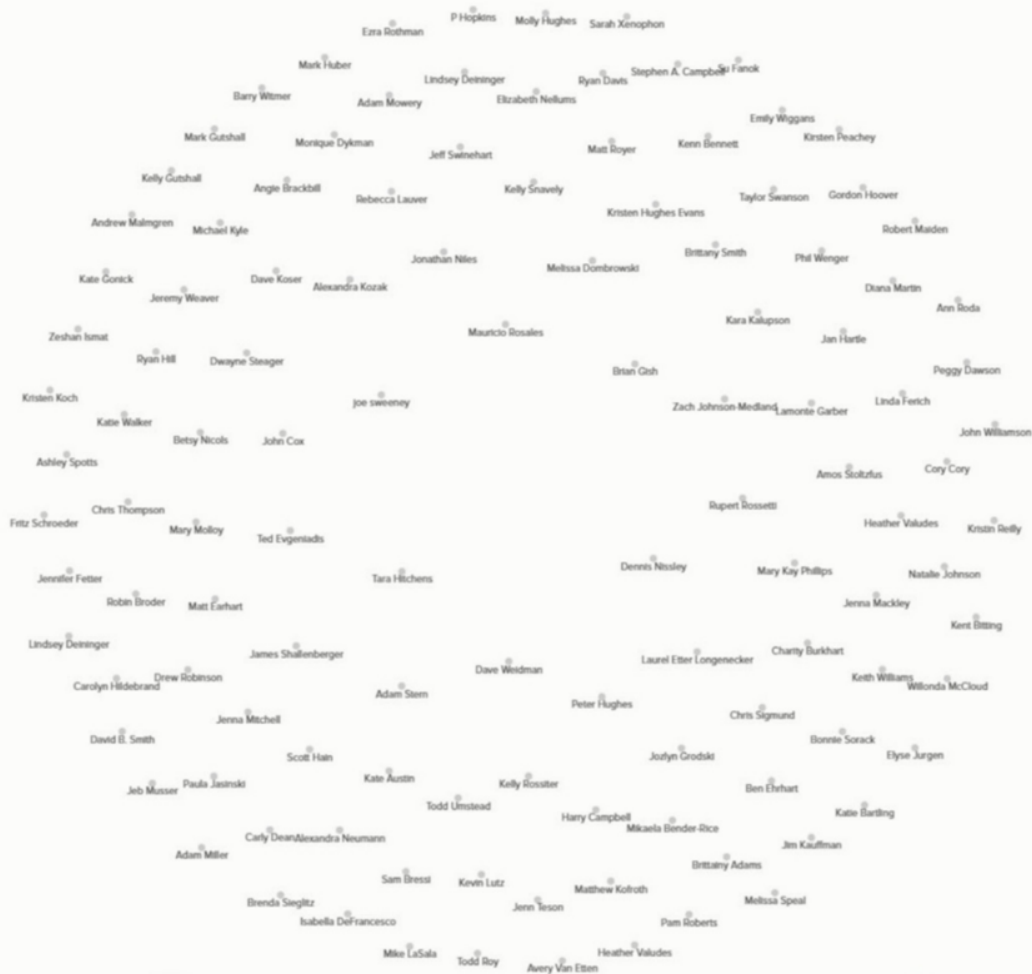


# Lancaster

CLEAN WATER PARTNERS

#lancaster-clean-water-partners | permalink

\*\*\*



# Multi-year support is essential because:

- We can only move at the speed of trust (Stephen Covey).
- Yearly and in phases along with local decision making allows us to be both strategic and reactive, as long as we have clarity.
- Operating with an attitude of abundance, not scarcity, allows bigger visionary thinking, which is where a network needs to function.
- The “ideal process” results confirmed sustainable funding is an essential element of success
- This is more than one organization can do alone.
- We are the network that facilitates collaboration to drive progress at the scale and pace needed for success.



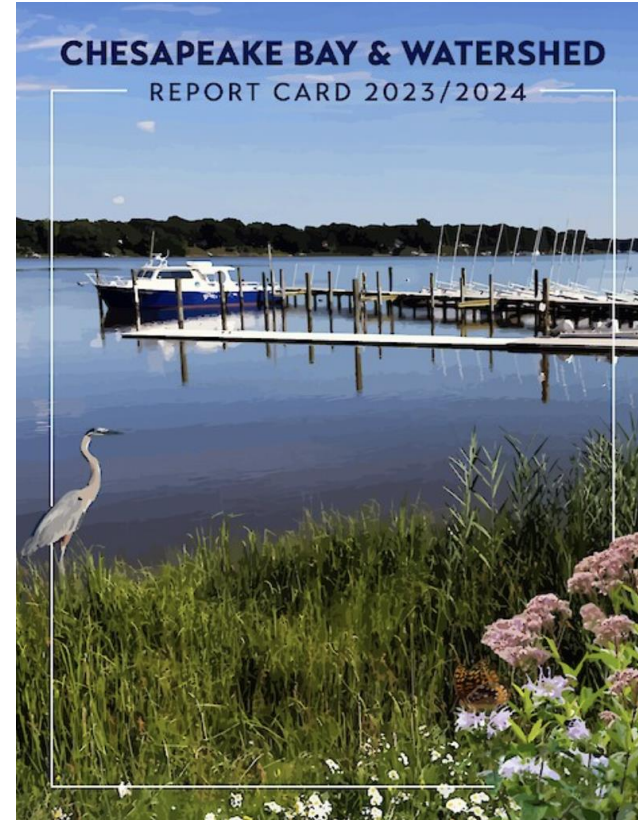
# Reminder: Best score in 22 years!

“The success story of the Susquehanna River and Chesapeake Bay underscores the importance of coordinated efforts and sustained investments in environmental conservation.”

“Acting Secretary Jessica Shirley pointed out that the cleaner water, better habitats, and healthier watersheds are direct returns on Pennsylvania’s investments over the past years. ‘Pennsylvania will build on the momentum from the last five years,’ she said. This continued commitment aims to clean up local waterways and, ultimately, the Chesapeake Bay.”



<https://www.mychesco.com/a/news/pennsylvania/shapiro-celebrates-record-improvements-in-susquehanna-river-and-chesapeake-bay-health/>

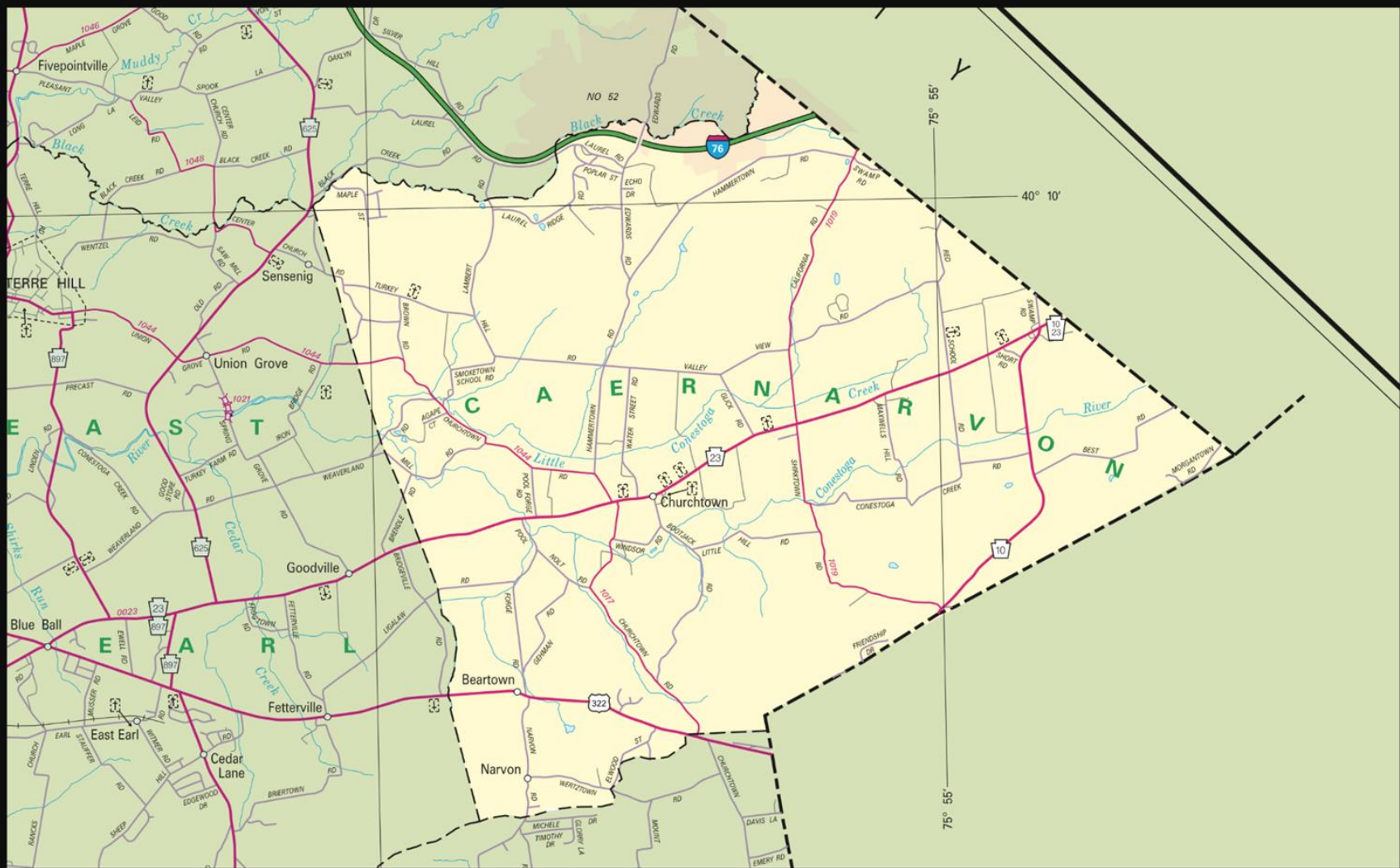


# Terry Martin

Caernarvon Township Staff and Board of Supervisors  
Lancaster County Planning Commission  
Lancaster County Transportation Technical Advisory Committee  
Municipal Liaison for the Lancaster Clean Water Partners









## Agriculture Advisory Board

- Audrey Perez
- Anthony Martin
- Raymond King
- Lewis Leid
- Ernie Mast
- James Sensenig
- Gary Van Dyke



### CAERNARVON TOWNSHIP

EST.  1729

LANCASTER COUNTY, PENNA

2139 MAIN ST, NARVON, PA 17555 • 717-445-4244





# Rapid Stream Delisting Dashboard



HA

1. Use this dropdown to choose area of interest

2. Use this dropdown to choose catchment(s) of interest

Lancaster

Co49

## Area Overview

HUC12 Name  
Upper Conestoga River

Catchment Area (ac)  
895

[2015 Environmental Justice Area Tract overlap?](#)  
No

HUC12 Code  
020503061103

Total Parcels  
84

[2022 PennDOT designated Urban Area overlap?](#)  
No

[Class A Trout Streams?](#)  
No

Priority Parcels  
11

[PA Most Effective Basin \(MEB\) overlap?](#)  
Yes

## Water Quality & Stream Information

[IBI score needed for delisting](#)  
50

Date of IBI Score  
2011 Sm

[Physical Habitat Assessment Score](#)  
N/A

[Stream Designated Use\(s\)](#)  
WWF

Total Stream Length (mi)  
2.1

Latest IBI Score  
35.2

[Impairment \(source - cause\)](#)

Total Ag Impaired Stream (mi)  
2.1

Grazing In Riparian Or Shoreline Zones - Siltation ; Grazing In  
Riparian Or Shoreline Zones - Organic Enrichment

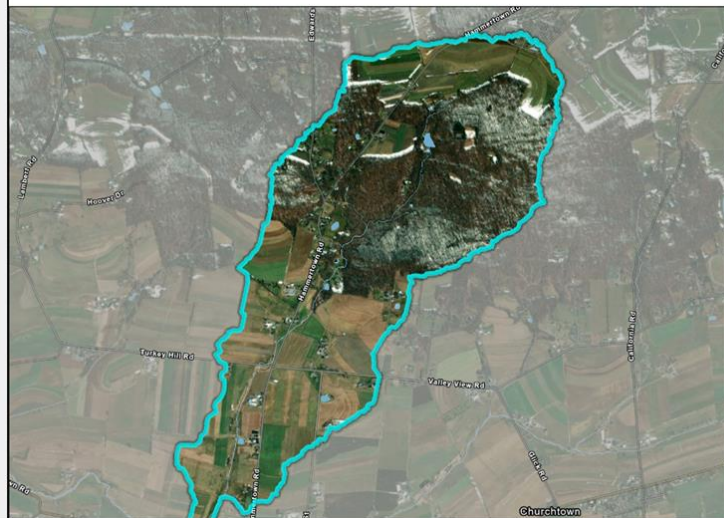
## Budget

Estimated total cost for full implementation

## Geography

Municipalities

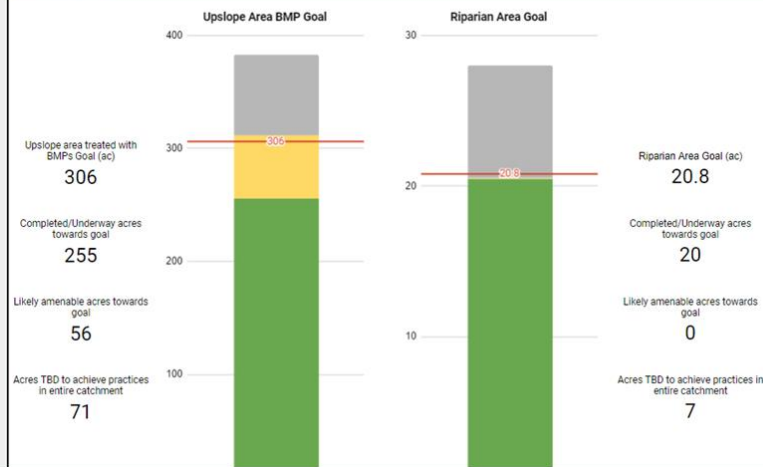
Caernarvon Twp



## Parcel Status



## Goals & Progress



**Hammertown  
Run**

**Winter 2014**





# Hammertown Run

Spring 2024









# Mike Hudson

Lancaster Outreach Coordinator

Mike@InterfaithChesapeake.org

443-955-1797



Stay connected at **[www.InterfaithChesapeake.org](http://www.InterfaithChesapeake.org)**

Interfaith Partners for the Chesapeake Pennsylvania Outreach Coordinator  
Lancaster Clean Water Partners Communication Action Committee  
Lancaster Water Week Steering Committee





# Forming Faithful Stewards, Caring for Sacred Waters.

"We are called to assist the Earth, to heal her wounds,  
and in the process heal our own."

*Wangari Maathai*

AmKolel Sanctuary Retreat Center  
Meadow Restoration



Our 

Faith 

Calls 

Us 

Together 

IPC's mission is to inspire and  
equip people of faith to honor,  
protect, and restore our shared  
watershed.



# Faith Teachings on Care for the Environment

---



- **Christian** – stewardship of Creation as an expression of “love thy neighbor”, Baptism – ritual of entering the Christian church.



- **Jewish** - Tikkun O'lam, repair and restoration of the whole world. Mikvah – a ritual bath.



- **Muslim** – Tawhid, observing the Oneness of God serves as the root of trusteeship and responsibility for God's Creation. Ablution – preparing for prayer.



- **Buddhist** – Interconnectedness of all life, compassion for the suffering of the natural and human world.



- **Sikh** - Air is the Teacher, Water is the Father and Earth is the Great Divine Mother of All and we must respect and protect her - Guru Nanak.

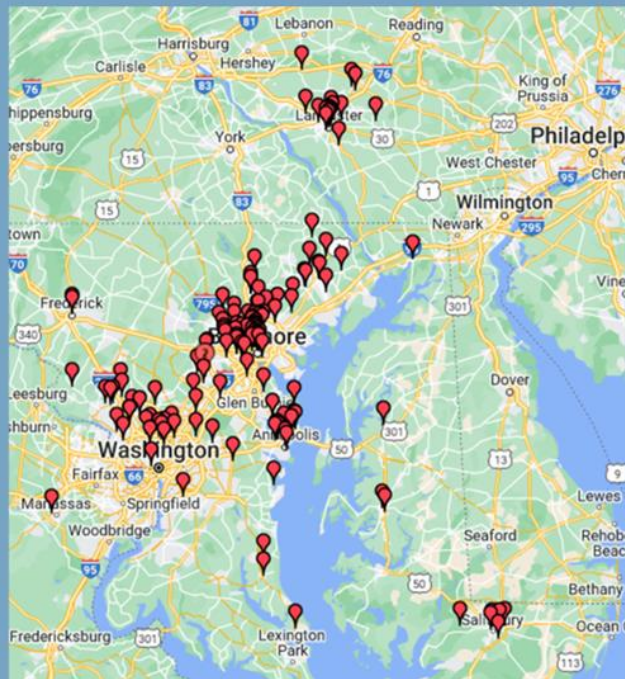






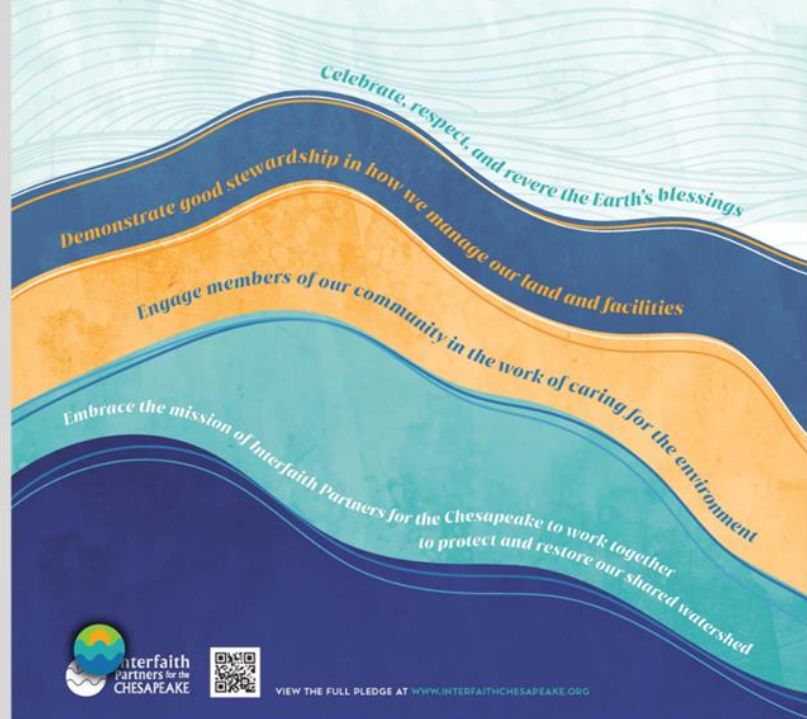


# Partner Congregation Pledge



AS A COMMUNITY OF FAITH, WE ARE CALLED TO HONOR OUR SACRED BOND WITH OUR CREATOR,  
SERVE AS GOOD STEWARDS OF THE LAND AND WATERS OF THE CHESAPEAKE, AND SUSTAIN THE LIFE  
AND HEALTH OF ALL CREATURES. THROUGH OUR WORDS AND ACTIONS,

**WE PLEDGE TO**



# The power of the collective

*We are a community of advocates, caregivers, and changemakers.*

*We are the safety net when the system fails, and we have the power to make our voices heard. So let's use that power wisely and strategically.*

*Let's not just be reactive; let's be proactive.*

*Let's not just be service providers; let's be storytellers.*

*Let's not just be organizations; let's be a movement.*

*Because when we come together, we don't just change the narrative; we change lives.*

- Joan Garry





# Want to learn more or get involved?

**There are various ways go stay up-to-date and get involved with our collective work!**

- Subscribe to our newsletter
- Download the podcast
- Follow us on social media (@LancasterCleanWaterPartners) and LinkedIn
- Be a voice for conservation and clean water on a board or with your local govt
- Join an [Action Team](#)
- Volunteer at a field event (tree planting, etc)
- Donate to the backbone organization
- Donate to the Clean Water Fund at the Community Foundation



Michelle Johnsen Photography

